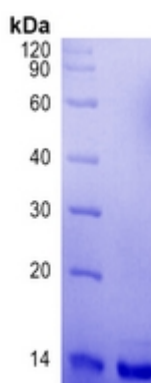


Recombinant MPXV A29L Protein

| Catalog # | Source | Reactivity | Applications |
|---------------------------|---|------------|---------------------|
| CRP3140 | E.coli | MPXV | E, WB, SDS-PAGE, MS |
| Description | Recombinant MPXV A29L Protein is produced by E.coli expression system and the target gene encoding Ser21-Glu110 is expressed with a 6His tag at the C-terminus. | | |
| Form | Liquid in a 0.2 µm filtered solution of PBS, 300 mM NaCl, pH 7.4. | | |
| Gene Symbol | | | |
| Alternative Names | A29L; IMV surface protein A29L | | |
| Entrez Gene | | | |
| SwissProt | AAP48865.1 | | |
| Purity | Greater than 95% as determined by reducing SDS-PAGE. | | |
| Chemical Structure | | | |
| Quality Control | | | |
| Directions for Use | Please minimize freeze-thaw cycles. | | |
| Storage/Stability | Store it at -20°C to -80°C for one year. It is recommended that the protein be aliquoted for optimal storage. Avoid repeated freeze-thaw cycles. | | |



Greater than 95% as determined by reducing SDS-PAGE.

Application key: E- ELISA, WB- Western blot, IH- Immunohistochemistry, IF- Immunofluorescence, FC- Flow cytometry, IC- Immunocytochemistry, IP- Immunoprecipitation, ChIP- Chromatin Immunoprecipitation, EMSA- Electrophoretic Mobility Shift Assay, BL- Blocking, SE- Sandwich ELISA, CBE- Cell-based ELISA, RNAi- RNA interference

Species reactivity key: H- Human, M- Mouse, R- Rat, B- Bovine, C- Chicken, D- Dog, G- Goat, Mk- Monkey, P- Pig, Rb- Rabbit, S- Sheep, Z- Zebrafish

COHESION BIOSCIENCES LIMITED

WEB
www.cohesionbio.com

ORDER
order@cohesionbio.com

SUPPORT
techsupport@cohesionbio.com

CUSTOM
custom@cohesionbio.com