

Product Data Sheet

Recombinant Human IL-23R Protein

Catalog #	Source	Reactivity	Applications
CRP2752	Human cells	Human	E, WB, SDS-PAGE, MS
Description	Recombinant Human IL-23R Protein is produced by mammalian expression system and the target gene encoding Gly24-Asp353 is expressed with a 6His tag at the C-terminus.		
Form	Lyophilized from a 0.2 μm filtered solution of PBS, pH7.4.		
Gene Symbol	IL23R		
Alternative Names	Interleukin-23 receptor; IL-23 receptor; IL-23R		
Entrez Gene	149233 (Human)		
SwissProt	Q5VWK5 (Human)		
Purity	Greater than 95% as determined by reducing SDS-PAGE.		
Chemical Structure	GITNINCSGH IWVEPATIFK MGMNISIYCQ AAIKNCQPRK LHFYKNGIKE RFQITRINKT TARLWYKNFL EPHASMYCTA ECPKHFQETL ICGKDISSGY PPDIPDEVTC VIYEYSGNMT CTWNAGKLTY IDTKYVVHVK SLETEEEQQY LTSSYINIST DSLQGGKKYL VVWQAANALG MEESKQLQIH LDDIVIPSAA VISRAETINA TVPKTIYWD SQTTEIKVSC EMRYKATTNQ TWNVKEFDTN FTYVQQSEFY LEPNIKYVFQ VRCQETGKRY WQPWSSPFFH KTPETVPQVT SKAFQHDTWN SGLTVASIST GHLTSDNRGD HHHHHH		
Quality Control	Endotoxin: Less than 0.1 ng/μg (1 IEU/μg) as determined by LAL test.		
Directions for Use	Always centrifuge tubes before opening. Do not mix by vortex or pipetting. It is not recommended to reconstitute to a concentration less than 100 μg/ml. Dissolve the lyophilized protein in ddH2O. Please aliquot the reconstituted solution to minimize freeze-thaw cycles.		
Storage/Stability	Lyophilized protein should be stored at -20°C, though stable at room temperature		
Application key: E- ELISA, WB- Western blot, IH- Immunohistochemistry, IF- Immunofluorescence, FC- Flow cytometry, IC- Immunocytochemistry, IP- Immunoprecipitation, ChIP- Chromatin Immunoprecipitation, EMSA- Electrophoretic Mobility Shift Assay, BL- Blocking, SE- Sandwich ELISA, CBE- Cell-based ELISA, RNAi- RNA interference			
Species reactivity key: H- Human, M- Mouse, R- Rat, B- Bovine, C- Chicken, D- Dog, G- Goat, Mk- Monkey, P- Pig, Rb- Rabbit, S- Sheep, Z- Zebrafish			

COHESION BIOSCIENCES LIMITED

WEB
www.cohesionbio.com

ORDER
order@cohesionbio.com

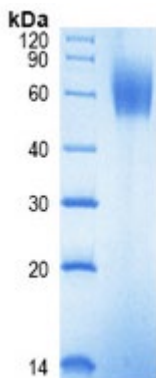
SUPPORT
techsupport@cohesionbio.com

CUSTOM
custom@cohesionbio.com

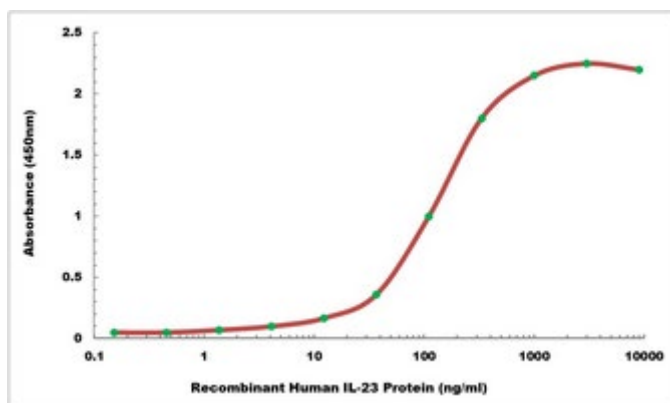
Product Data Sheet

for 3 weeks. Reconstituted protein solution can be stored at 2-8°C for 2-7 days.

Aliquots of reconstituted samples are stable at -20°C for 3 months.



Greater than 95% as determined by reducing SDS-PAGE.



Immobilized Human IL-23R Protein at 5 µg/ml (100 µl/well) can bind Human IL-23.

Application key: E- ELISA, WB- Western blot, IH- Immunohistochemistry, IF- Immunofluorescence, FC- Flow cytometry, IC- Immunocytochemistry, IP- Immunoprecipitation, ChIP- Chromatin Immunoprecipitation, EMSA- Electrophoretic Mobility Shift Assay, BL- Blocking, SE- Sandwich ELISA, CBE- Cell-based ELISA, RNAi- RNA interference

Species reactivity key: H- Human, M- Mouse, R- Rat, B- Bovine, C- Chicken, D- Dog, G- Goat, Mk- Monkey, P- Pig, Rb- Rabbit, S- Sheep, Z- Zebrafish

COHESION BIOSCIENCES LIMITED

WEB
www.cohesionbio.com

ORDER
order@cohesionbio.com

SUPPORT
techsupport@cohesionbio.com

CUSTOM
custom@cohesionbio.com