

## Anti-TFII $\alpha$ Antibody

| Catalog #                | Source   | Reactivity | Applications  |
|--------------------------|--|------------|---------------|
| CQA4633                  | Rabbit   | H, M, R    | WB, IH, IF/IC |
| <b>Description</b>       | Rabbit polyclonal antibody to TFII $\alpha$  |            |               |
| <b>Immunogen</b>         | Recombinant fusion protein of human TFII $\alpha$ . The exact sequence is proprietary.   |            |               |
| <b>Purification</b>      | The antibody was purified by immunogen affinity chromatography.  |            |               |
| <b>Specificity</b>       | Recognizes endogenous levels of TFII $\alpha$ protein  |            |               |
| <b>Clonality</b>         | Polyclonal   |            |               |
| <b>Conjugation</b>       |  |            |               |
| <b>Form</b>              | Liquid in 0.42% Potassium phosphate, 0.87% Sodium chloride, pH 7.3, 30% glycerol, and 0.01% sodium azide.  |            |               |
| <b>Dilution</b>          | WB (1/500 - 1/2000), IH (1/50 - 1/200), IF/IC (1/50 - 1/200)   |            |               |
| <b>Gene Symbol</b>       | GTF2E1   |            |               |
| <b>Alternative Names</b> | TF2E1; General transcription factor IIE subunit 1; General transcription factor IIE 56 kDa subunit; Transcription initiation factor IIE subunit alpha; TFII $\alpha$ |            |               |
| <b>Entrez Gene</b>       | 2960 (Human); 74197 (Mouse)  |            |               |
| <b>SwissProt</b>         | P29083 (Human); Q9D0D5 (Mouse)   |            |               |
| <b>Storage/Stability</b> | Shipped at 4°C. Upon delivery aliquot and store at -20°C for one year. Avoid freeze/thaw cycles.   |            |               |

**Application key:** E- ELISA, WB- Western blot, IH- Immunohistochemistry, IF- Immunofluorescence, FC- Flow cytometry, IC- Immunocytochemistry, IP- Immunoprecipitation, CHIP- Chromatin Immunoprecipitation, EMSA- Electrophoretic Mobility Shift Assay, BL- Blocking, SE- Sandwich ELISA, CBE- Cell-based ELISA, RNAi- RNA interference

**Species reactivity key:** H- Human, M- Mouse, R- Rat, B- Bovine, C- Chicken, D- Dog, G- Goat, Mk- Monkey, P- Pig, Rb- Rabbit, S- Sheep, Z- Zebrafish

### COHESION BIOSCIENCES LIMITED

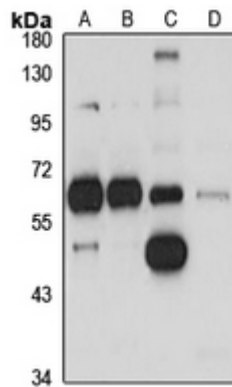
**WEB**  
[www.cohesionbio.com](http://www.cohesionbio.com)

**ORDER**  
[order@cohesionbio.com](mailto:order@cohesionbio.com)

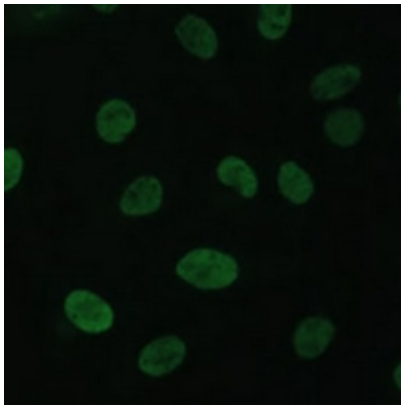
**SUPPORT**  
[techsupport@cohesionbio.com](mailto:techsupport@cohesionbio.com)

**CUSTOM**  
[custom@cohesionbio.com](mailto:custom@cohesionbio.com)

## Product Data Sheet



Western blot analysis of TFIIIE-alpha expression in Jurkat (A), A431 (B), mouse brain (C), mouse spleen (D) whole cell lysates. (Predicted band size: 49 kD; Observed band size: 60 kD)



Immunofluorescent analysis of TFIIIE-alpha staining in U2OS cells. Formalin-fixed cells were permeabilized with 0.1% Triton X-100 in TBS for 5-10 minutes and blocked with 3% BSA-PBS for 30 minutes at room temperature. Cells were probed with the primary antibody in 3% BSA-PBS and incubated overnight at 4 °C in a humidified chamber. Cells were washed with PBST and incubated with a Alexa Fluor 488-conjugated secondary antibody (green) in PBS at room temperature in the dark.

**Application key:** E- ELISA, WB- Western blot, IH- Immunohistochemistry, IF- Immunofluorescence, FC- Flow cytometry, IC- Immunocytochemistry, IP- Immunoprecipitation, CHIP- Chromatin Immunoprecipitation, EMSA- Electrophoretic Mobility Shift Assay, BL- Blocking, SE- Sandwich ELISA, CBE- Cell-based ELISA, RNAi- RNA interference

**Species reactivity key:** H- Human, M- Mouse, R- Rat, B- Bovine, C- Chicken, D- Dog, G- Goat, Mk- Monkey, P- Pig, Rb- Rabbit, S- Sheep, Z- Zebrafish

### COHESION BIOSCIENCES LIMITED

**WEB**

[www.cohesionbio.com](http://www.cohesionbio.com)

**ORDER**

[order@cohesionbio.com](mailto:order@cohesionbio.com)

**SUPPORT**

[techsupport@cohesionbio.com](mailto:techsupport@cohesionbio.com)

**CUSTOM**

[custom@cohesionbio.com](mailto:custom@cohesionbio.com)