

Product Data Sheet

Anti-ECE2 Antibody

| Catalog # | Source | Reactivity | Applications |
|--------------------------|---|------------|--------------|
| CQA4327 | Rabbit | H | WB |
| Description | Rabbit polyclonal antibody to ECE2 | | |
| Immunogen | Recombinant fusion protein of human ECE2. The exact sequence is proprietary. | | |
| Purification | The antibody was purified by immunogen affinity chromatography. | | |
| Specificity | Recognizes endogenous levels of ECE2 protein | | |
| Clonality | Polyclonal | | |
| Conjugation | | | |
| Form | Liquid in 0.42% Potassium phosphate, 0.87% Sodium chloride, pH 7.3, 30% glycerol, and 0.01% sodium azide. | | |
| Dilution | WB (1/500 - 1/2000) | | |
| Gene Symbol | ECE2 | | |
| Alternative Names | KIAA0604; Endothelin-converting enzyme 2; ECE-2 | | |
| Entrez Gene | 9718 (Human) | | |
| SwissProt | O60344 (Human) | | |
| Storage/Stability | Shipped at 4° C. Upon delivery aliquot and store at -20° C for one year. Avoid freeze/thaw cycles. | | |

Application key: E- ELISA, WB- Western blot, IH- Immunohistochemistry, IF- Immunofluorescence, FC- Flow cytometry, IC- Immunocytochemistry, IP- Immunoprecipitation, ChIP- Chromatin Immunoprecipitation, EMSA- Electrophoretic Mobility Shift Assay, BL- Blocking, SE- Sandwich ELISA, CBE- Cell-based ELISA, RNAi- RNA interference

Species reactivity key: H- Human, M- Mouse, R- Rat, B- Bovine, C- Chicken, D- Dog, G- Goat, Mk- Monkey, P- Pig, Rb- Rabbit, S- Sheep, Z- Zebrafish

COHESION BIOSCIENCES LIMITED

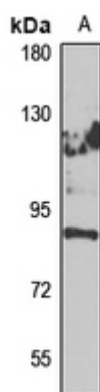
WEB
www.cohesionbio.com

ORDER
order@cohesionbio.com

SUPPORT
techsupport@cohesionbio.com

CUSTOM
custom@cohesionbio.com

Product Data Sheet



Western blot analysis of ECE2 expression in HepG2 (A) whole cell lysates. (Predicted band size: 28; 83; 86; 91; 99 kD; Observed band size: 90 kD)

Application key: E- ELISA, WB- Western blot, IH- Immunohistochemistry, IF- Immunofluorescence, FC- Flow cytometry, IC- Immunocytochemistry, IP- Immunoprecipitation, ChIP- Chromatin Immunoprecipitation, EMSA- Electrophoretic Mobility Shift Assay, BL- Blocking, SE- Sandwich ELISA, CBE- Cell-based ELISA, RNAi- RNA interference

Species reactivity key: H- Human, M- Mouse, R- Rat, B- Bovine, C- Chicken, D- Dog, G- Goat, Mk- Monkey, P- Pig, Rb- Rabbit, S- Sheep, Z- Zebrafish

COHESION BIOSCIENCES LIMITED

WEB
www.cohesionbio.com

ORDER
order@cohesionbio.com

SUPPORT
techsupport@cohesionbio.com

CUSTOM
custom@cohesionbio.com