

Product Data Sheet

Anti-PRDM7 Antibody

Catalog #	Source	Reactivity	Applications
CQA1702	Rabbit	H, M, R	WB, IF/IC
Description	Rabbit polyclonal antibody to PRDM7		
Immunogen	Recombinant full length protein of human PRDM7		
Purification	The antibody was purified by immunogen affinity chromatography.		
Specificity	Recognizes endogenous levels of PRDM7 protein.		
Clonality	Polyclonal		
Conjugation			
Form	Liquid in 0.42% Potassium phosphate, 0.87% Sodium chloride, pH 7.3, 30% glycerol, and 0.01% sodium azide.		
Dilution	WB (1/500 - 1/2000), IF/IC (1/50 - 1/100)		
Gene Symbol	PRDM7		
Alternative Names	PFM4; Probable histone-lysine N-methyltransferase PRDM7; PR domain zinc finger protein 7; PR domain-containing protein 7		
Entrez Gene	11105 (Human)		
SwissProt	Q9NQW5 (Human)		
Storage/Stability	Shipped at 4° C. Upon delivery aliquot and store at -20° C for one year. Avoid freeze/thaw cycles.		

Application key: E- ELISA, WB- Western blot, IH- Immunohistochemistry, IF- Immunofluorescence, FC- Flow cytometry, IC- Immunocytochemistry, IP- Immunoprecipitation, ChIP- Chromatin Immunoprecipitation, EMSA- Electrophoretic Mobility Shift Assay, BL- Blocking, SE- Sandwich ELISA, CBE- Cell-based ELISA, RNAi- RNA interference

Species reactivity key: H- Human, M- Mouse, R- Rat, B- Bovine, C- Chicken, D- Dog, G- Goat, Mk- Monkey, P- Pig, Rb- Rabbit, S- Sheep, Z- Zebrafish

COHESION BIOSCIENCES LIMITED

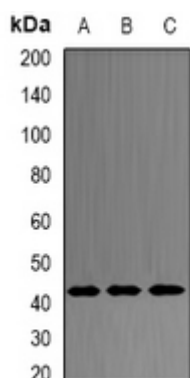
WEB
www.cohesionbio.com

ORDER
order@cohesionbio.com

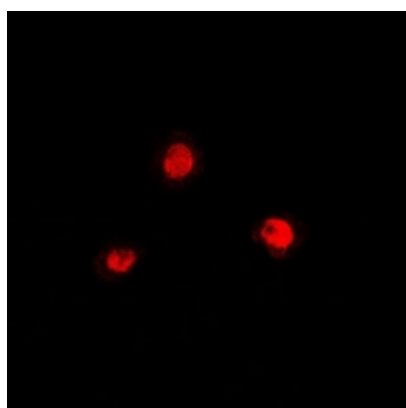
SUPPORT
techsupport@cohesionbio.com

CUSTOM
custom@cohesionbio.com

Product Data Sheet



Western blot analysis of PRDM7 expression in HepG2 (A), mouse intestine (B), rat ovary (C) whole cell lysates. (Predicted band size: 18; 45; 55 kD; Observed band size: 45 kD)



Immunofluorescent analysis of PRDM7 staining in A549 cells. Formalin-fixed cells were permeabilized with 0.1% Triton X-100 in TBS for 5-10 minutes and blocked with 3% BSA-PBS for 30 minutes at room temperature. Cells were probed with the primary antibody in 3% BSA-PBS and incubated overnight at 4 ° C in a humidified chamber. Cells were washed with PBST and incubated with a DyLight 594-conjugated secondary antibody (red) in PBS at room temperature in the dark.

Application key: E- ELISA, WB- Western blot, IH- Immunohistochemistry, IF- Immunofluorescence, FC- Flow cytometry, IC- Immunocytochemistry, IP- Immunoprecipitation, ChIP- Chromatin Immunoprecipitation, EMSA- Electrophoretic Mobility Shift Assay, BL- Blocking, SE- Sandwich ELISA, CBE- Cell-based ELISA, RNAi- RNA interference

Species reactivity key: H- Human, M- Mouse, R- Rat, B- Bovine, C- Chicken, D- Dog, G- Goat, Mk- Monkey, P- Pig, Rb- Rabbit, S- Sheep, Z- Zebrafish

COHESION BIOSCIENCES LIMITED

WEB
www.cohesionbio.com

ORDER
order@cohesionbio.com

SUPPORT
techsupport@cohesionbio.com

CUSTOM
custom@cohesionbio.com