

## Anti-AP2-alpha-2 Antibody

Catalog #	Source	Reactivity	Applications
CQA1201	Rabbit	H, M, R	WB, IH
<b>Description</b>	Rabbit polyclonal antibody to AP2-alpha-2		
<b>Immunogen</b>	Recombinant full length protein of human AP2-alpha-2		
<b>Purification</b>	The antibody was purified by immunogen affinity chromatography.		
<b>Specificity</b>	Recognizes endogenous levels of AP2-alpha-2 protein.		
<b>Clonality</b>	Polyclonal		
<b>Conjugation</b>			
<b>Form</b>	Liquid in 0.42% Potassium phosphate, 0.87% Sodium chloride, pH 7.3, 30% glycerol, and 0.01% sodium azide.		
<b>Dilution</b>	WB (1/500 - 1/2000), IH (1/50 - 1/200)		
<b>Gene Symbol</b>	AP2A2		
<b>Alternative Names</b>	ADTAB; CLAPA2; HIP9; HYPJ; KIAA0899; AP-2 complex subunit alpha-2; 100 kDa coated vesicle protein C; Adapter-related protein complex 2 subunit alpha-2; Adaptor protein complex AP-2 subunit alpha-2; Alpha-adaptin C; Alpha2-adaptin; Clathrin assembly protein complex 2 alpha-C large chain; Huntingtin yeast partner J; Huntingtin-interacting protein 9; HIP-9; Huntingtin-interacting protein J; Plasma membrane adaptor HA2/AP2 adaptin alpha C subunit		
<b>Entrez Gene</b>	161 (Human); 11772 (Mouse)		
<b>SwissProt</b>	O94973 (Human); P17427 (Mouse); P18484 (Rat)		
<b>Storage/Stability</b>	Shipped at 4°C. Upon delivery aliquot and store at -20°C for one year. Avoid freeze/thaw cycles.		

**Application key:** E- ELISA, WB- Western blot, IH- Immunohistochemistry, IF- Immunofluorescence, FC- Flow cytometry, IC- Immunocytochemistry, IP- Immunoprecipitation, ChIP- Chromatin Immunoprecipitation, EMSA- Electrophoretic Mobility Shift Assay, BL- Blocking, SE- Sandwich ELISA, CBE- Cell-based ELISA, RNAi- RNA interference

**Species reactivity key:** H- Human, M- Mouse, R- Rat, B- Bovine, C- Chicken, D- Dog, G- Goat, Mk- Monkey, P- Pig, Rb- Rabbit, S- Sheep, Z- Zebrafish

### COHESION BIOSCIENCES LIMITED

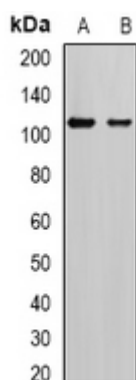
**WEB**  
www.cohesionbio.com

**ORDER**  
order@cohesionbio.com

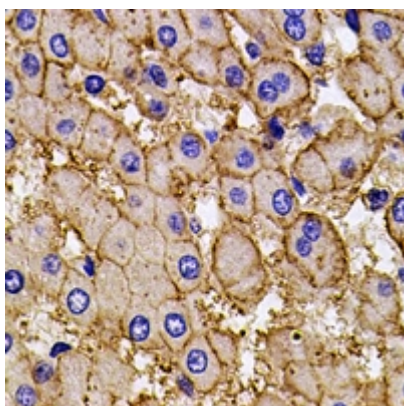
**SUPPORT**  
techsupport@cohesionbio.com

**CUSTOM**  
custom@cohesionbio.com

## Product Data Sheet



Western blot analysis of AP2-alpha-2 expression in SKOV3 (A), mouse brain (B) whole cell lysates. (Predicted band size: 73; 103; 104 kD; Observed band size: 104 kD)



Immunohistochemical analysis of AP2-alpha-2 staining in human liver cancer formalin fixed paraffin embedded tissue section. The section was pre-treated using heat mediated antigen retrieval with sodium citrate buffer (pH 6.0). The section was then incubated with the antibody at room temperature and detected using an HRP conjugated compact polymer system. DAB was used as the chromogen. The section was then counterstained with haematoxylin and mounted with DPX.

**Application key:** E- ELISA, WB- Western blot, IH- Immunohistochemistry, IF- Immunofluorescence, FC- Flow cytometry, IC- Immunocytochemistry, IP- Immunoprecipitation, ChIP- Chromatin Immunoprecipitation, EMSA- Electrophoretic Mobility Shift Assay, BL- Blocking, SE- Sandwich ELISA, CBE- Cell-based ELISA, RNAi- RNA interference

**Species reactivity key:** H- Human, M- Mouse, R- Rat, B- Bovine, C- Chicken, D- Dog, G- Goat, Mk- Monkey, P- Pig, Rb- Rabbit, S- Sheep, Z- Zebrafish

**COHESION BIOSCIENCES LIMITED**

**WEB**  
[www.cohesionbio.com](http://www.cohesionbio.com)

**ORDER**  
[order@cohesionbio.com](mailto:order@cohesionbio.com)

**SUPPORT**  
[techsupport@cohesionbio.com](mailto:techsupport@cohesionbio.com)

**CUSTOM**  
[custom@cohesionbio.com](mailto:custom@cohesionbio.com)