

Product Data Sheet

Recombinant Anti-SAP61 Rabbit mAb

| Catalog # | Source | Reactivity | Applications |
|--------------------------|--|------------|--------------|
| CMA4218 | Rabbit | H, M | WB, IH |
| Description | Recombinant rabbit monoclonal antibody to SAP61 | | |
| Immunogen | KLH-conjugated synthetic peptide encompassing a sequence within human SAP61. The exact sequence is proprietary. | | |
| Purification | The antibody was purified by immunogen affinity chromatography. | | |
| Specificity | Recognizes endogenous levels of SAP61 protein | | |
| Clonality | Monoclonal | | |
| Conjugation | | | |
| Form | Liquid in PBS containing 50% glycerol, 0.2% BSA and 0.01% sodium azide. | | |
| Dilution | WB (1/500 - 1/1000), IH (1/50 - 1/200) | | |
| Gene Symbol | SF3A3 | | |
| Alternative Names | SAP61; Splicing factor 3A subunit 3; SF3a60; Spliceosome-associated protein 61; SAP 61 | | |
| Entrez Gene | 10946 (Human); 75062 (Mouse) | | |
| SwissProt | Q12874 (Human); Q9D554 (Mouse) | | |
| Storage/Stability | Shipped at 4°C. Upon delivery aliquot and store at -20°C for one year. Avoid freeze/thaw cycles. | | |

Application key: E- ELISA, WB- Western blot, IH- Immunohistochemistry, IF- Immunofluorescence, FC- Flow cytometry, IC- Immunocytochemistry, IP- Immunoprecipitation, ChIP- Chromatin Immunoprecipitation, EMSA- Electrophoretic Mobility Shift Assay, BL- Blocking, SE- Sandwich ELISA, CBE- Cell-based ELISA, RNAi- RNA interference

Species reactivity key: H- Human, M- Mouse, R- Rat, B- Bovine, C- Chicken, D- Dog, G- Goat, Mk- Monkey, P- Pig, Rb- Rabbit, S- Sheep, Z- Zebrafish

COHESION BIOSCIENCES LIMITED

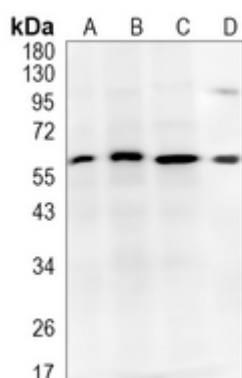
WEB
www.cohesionbio.com

ORDER
order@cohesionbio.com

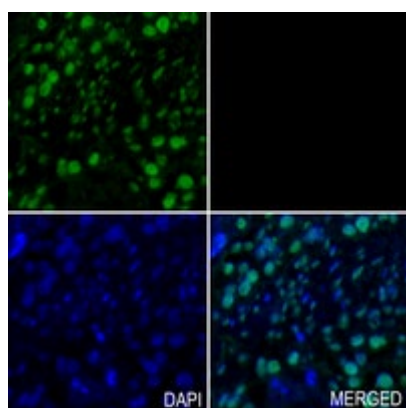
SUPPORT
techsupport@cohesionbio.com

CUSTOM
custom@cohesionbio.com

Product Data Sheet



Western blot analysis of SAP61 expression in HEK293T (A), Hela (B), K562 (C), mouse muscle (D) whole cell lysates. (Predicted band size: 58 kD; Observed band size: 59 kD)



Immunohistochemical analysis of SAP61 staining in human squamous cell carcinoma formalin fixed paraffin embedded tissue section. The section was pre-treated using heat mediated antigen retrieval with sodium citrate buffer (pH 6.0). The section was then incubated with the antibody at room temperature and detected using an HRP conjugated compact polymer system. Tyramide-AF488 (green) was used as the chromogen. The section was then counterstained with DAPI (blue).

Application key: E- ELISA, WB- Western blot, IH- Immunohistochemistry, IF- Immunofluorescence, FC- Flow cytometry, IC- Immunocytochemistry, IP- Immunoprecipitation, ChIP- Chromatin Immunoprecipitation, EMSA- Electrophoretic Mobility Shift Assay, BL- Blocking, SE- Sandwich ELISA, CBE- Cell-based ELISA, RNAi- RNA interference

Species reactivity key: H- Human, M- Mouse, R- Rat, B- Bovine, C- Chicken, D- Dog, G- Goat, Mk- Monkey, P- Pig, Rb- Rabbit, S- Sheep, Z- Zebrafish

COHESION BIOSCIENCES LIMITED

WEB
www.cohesionbio.com

ORDER
order@cohesionbio.com

SUPPORT
techsupport@cohesionbio.com

CUSTOM
custom@cohesionbio.com