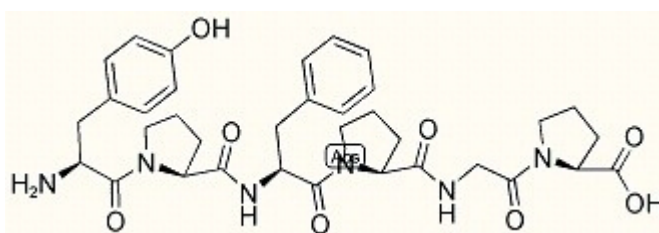


Beta-Casomorphin (1-6) (Bovine)

Catalog #	Source	Reactivity	Applications
CCP2048	Synthetic		
Description		Peptide to Beta-Casomorphin (1-6) (Bovine)	
Form		Lyophilized powder	
CAS Number			
Molecular Formula		C35H44N6O8	
Molecular Weight		676.78	
Purity		> 95%	
Chemical Structure		Tyr - Pro - Phe - Pro - Gly - Pro	
Storage/Stability		Shipped at 4°C. Store at -20°C for one year.	
Structure			



Application key: E- ELISA, WB- Western blot, IH- Immunohistochemistry, IF- Immunofluorescence, FC- Flow cytometry, IC- Immunocytochemistry, IP- Immunoprecipitation, ChIP- Chromatin Immunoprecipitation, EMSA- Electrophoretic Mobility Shift Assay, SE- Sandwich ELISA, CBE- Cell-based ELISA, RNAi- RNA interference

Species reactivity key: H- Human, M- Mouse, R- Rat, B- Bovine, C- Chicken, D- Dog, Mk- Monkey, P- Pig, Rb- Rabbit, S- Sheep, Z- Zebrafish

COHESION BIOSCIENCES LIMITED

WEB
www.cohesionbio.com

ORDER
order@cohesionbio.com

SUPPORT
techsupport@cohesionbio.com

CUSTOM
custom@cohesionbio.com