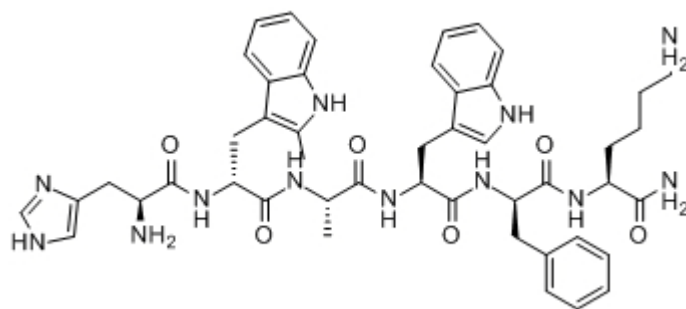


Hexarelin

Catalog #	Source	Reactivity	Applications
CCP1260	Synthetic		
Description	Peptide to Hexarelin		
Biological Description	Highly potent growth hormone secretagogue receptor agonist (IC50 = 18 pM). Inhibits apoptosis. Ghrelin analogue. Cardioprotective agent.		
Form	Lyophilized powder		
CAS Number	140703-51-1		
Molecular Formula	C47H58N12O6		
Molecular Weight	887		
Purity	> 95%		
Chemical Structure	His - D - 2 - Me - Trp - Ala - Trp - D - Phe - Lys - NH2		
Storage/Stability	Shipped at 4°C. Store at -20°C for one year.		
Structure			



Application key: E- ELISA, WB- Western blot, IH- Immunohistochemistry, IF- Immunofluorescence, FC- Flow cytometry, IC- Immunocytochemistry, IP- Immunoprecipitation, ChIP- Chromatin Immunoprecipitation, EMSA- Electrophoretic Mobility Shift Assay, SE- Sandwich ELISA, CBE- Cell-based ELISA, RNAi- RNA interference

Species reactivity key: H- Human, M- Mouse, R- Rat, B- Bovine, C- Chicken, D- Dog, Mk- Monkey, P- Pig, Rb- Rabbit, S- Sheep, Z- Zebrafish

COHESION BIOSCIENCES LIMITED

WEB
www.cohesionbio.com

ORDER
order@cohesionbio.com

SUPPORT
techsupport@cohesionbio.com

CUSTOM
custom@cohesionbio.com